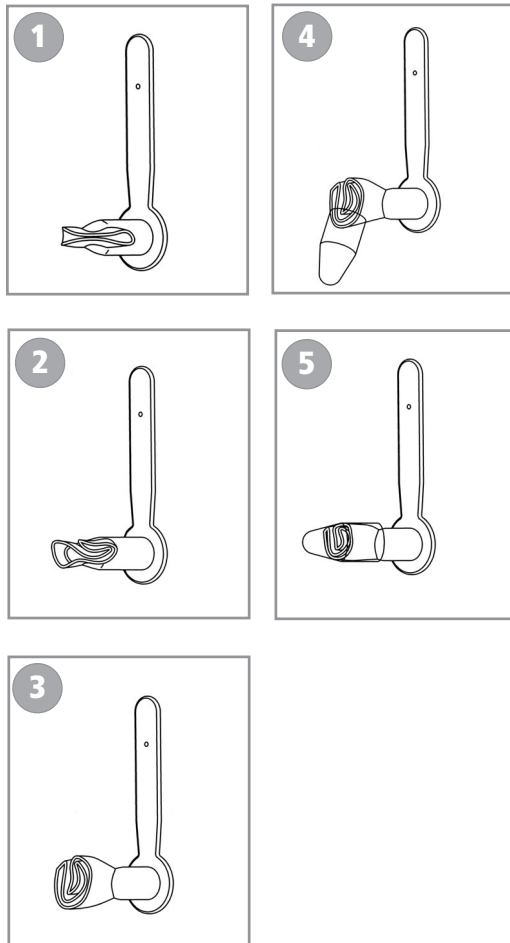


Taper-Tip™ Gel Cap Loading Instructions for:

- Blom-Singer® Indwelling Voice Prosthesis, Large Esophageal Flange

Be certain that your hands and the voice prosthesis are completely dry before loading the gel cap. Failure to do so may cause premature dissolving of the gel cap. Always handle the prosthesis with clean, gloved hands.

1. Fold the esophageal retention flange in half toward the center of the valve (diagram 1).
2. Fold one outer edge of the esophageal retention flange up against the folded flange (diagram 2). Repeat same fold for opposite edge.
3. Squeeze and hold the prosthesis in this folded position (diagram 3).
4. Insert the folded portion of the esophageal retention flange into the the Taper-Tip gel cap. Gently tuck and push the folded prosthesis into the gel cap (diagram 4). If necessary, use plastic tweezers or a flange introducer as an aid to insert any remaining portion of the folded esophageal retention flange completely into the gel cap. Do not use any sharp or serated instruments to avoid damaging the prosthesis.
5. The esophageal retention flange should be folded in a forward position and completely enclosed inside the gel cap (diagram 5).

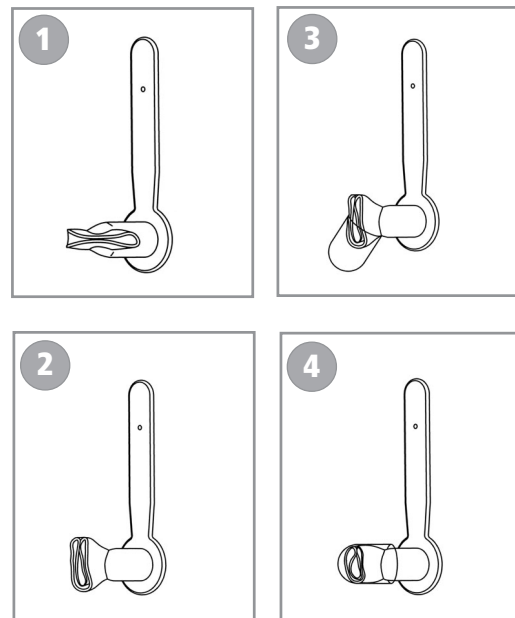


20 Fr. Gel Cap Loading Instructions for:

- Blom-Singer® Indwelling Voice Prosthesis, Special Lengths

Be certain that your hands and the voice prosthesis are completely dry before loading the gel cap. Failure to do so may cause premature dissolving of the gel cap. Always handle the prosthesis with clean, gloved hands.

1. Fold the esophageal retention flange in half toward the center of the valve (diagram 1).
2. Fold the two outer edges of the esophageal retention flange up against the folded flange (diagram 2). Squeeze and hold the prosthesis in this folded position.
3. Insert the folded portion of the esophageal retention flange into the the 20 Fr. gel cap. Gently tuck and push the folded prosthesis into the gel cap (diagram 3). If necessary, use plastic tweezers or a flange introducer as an aid to insert any remaining portion of the folded esophageal retention flange completely into the gel cap. Do not use any sharp or serated instruments to avoid damaging the prosthesis.
4. The esophageal retention flange should be folded in a forward position and completely enclosed inside the gel cap (diagram 4).



Manufacturer

International Healthcare Technologies • A Division of Helix Medical, Inc.
1110 Mark Avenue • Carpinteria, CA 93013-2918 USA • www.inhealth.com